

ITALIAN BUFFALO

with Basil, Blackberry, Turmeric, Flaxseed & Apple

ADULT DOG

65%

TOTAL

65% TOTAL BUFFALO, LAMB & BEEF

Rich in essential amino acids, vitamins & minerals to support every day health and well-being.

35%

MINIMUM

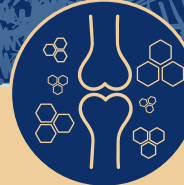
MINIMUM 35% FRESHLY PREPARED

Italian Buffalo



DIGESTIVE HEALTH

Added pre-biotics MOS & FOS help aid digestive health



JOINT SUPPORT

Naturally occurring collagen helps maintain healthy joints and skin.

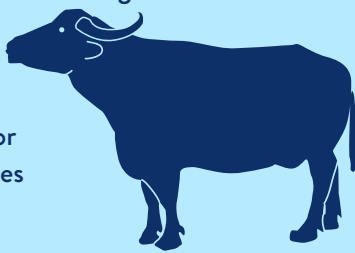


SUPERFOOD BLEND

A blend of 5 carefully selected superfoods each with their own benefits.

ITALIAN BUFFALO

Italian Mediterranean Buffalo are a breed of water buffalo most commonly raised outdoors in Southern Italy. In comparison to traditional beef, buffalo is considered to be a lean red meat which naturally has a lower fat content and is high in protein. Buffalo is thought to be a novel source of protein in pet food, and therefore can make a great alternative for dogs with intolerances to certain proteins.



SUPERFOODS



BASIL: Rich in beta-carotene, which play an important role in maintaining healthy vision.



FLAXSEED: Natural source of omega 3 fatty acids which have anti-inflammatory properties and support skin, coat and joint health.



BLACKBERRY: Good source of Vitamin C known for its antioxidant properties which may help support the immune system.



APPLE: Source of dietary fibre to help support digestive health.

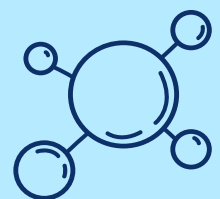


TURMERIC: Turmeric is a source of antioxidants which act as an anti-inflammatory and can help to soothe the digestive tract.

NATURALLY OCCURRING COLLAGEN

Your 35% Minimum Freshly Prepared Italian Buffalo has naturally occurring Collagen.

- ✓ Naturally occurring collagen is found in freshly prepared ingredients
- ✓ Provides important building blocks for the body
- ✓ Helps maintain healthy bones, joints and skin



COMPOSITION



35% FRESHLY PREPARED ITALIAN BUFFALO

15.5% LAMB

14.5% BEEF

OTHER FUNCTIONAL INGREDIENTS

BASIL*

BLACKBERRY*

TURMERIC*

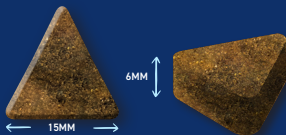
FLAXSEED*

APPLE*

65% Buffalo, Beef & Lamb (Freshly Prepared Italian Buffalo (35%), Dried Beef (14.5%), Dried Lamb (10%), Lamb Fat (4%), Lamb Gravy (1.5%)), Sweet Potato, Beans, Dried Superfood Blend* (including Basil, Blackberry, Turmeric, Flaxseed, Apple), Beet Pulp, Omega 3 Supplement, Minerals, Joint Pack (Glucosamine 178 mg/kg, Methylsulfonylmethane 178 mg/kg, Chondroitin Sulphate 125 mg/kg), Fructooligosaccharides (175 mg/kg), Mannanooligosaccharides (50 mg/kg), Olive Extract (0.01%)

*Each equivalent to 4% Fresh Ingredients

KIBBLE SIZE



Our adult dog kibble has been optimised and designed to suit all mouths. Product shown at actual size. Each kibble has a tolerance of +/- 1mm.

ANALYTICAL CONSTITUENTS

Crude Protein	36%	Metabolisable Energy	362 kcal/100g
Crude Fat	16%	Omega 6 Fatty Acids	0.9%
Crude Fibre	5.5%	Omega 3 Fatty Acids	1.2%
Crude Ash	9%	Calcium	1.4%
Moisture	8%	Phosphorus	1.2%
NFE	25.5%	Collagen	10%

NUTRITIONAL ADDITIVES (PER KG)

VITAMINS:

Vitamin A 14,423 IU, Vitamin D3 2,000 IU, Vitamin E 96 IU;

TRACE ELEMENTS:

Zinc (Zinc Sulphate Monohydrate) 48 mg,
Iron (Iron (II) Sulphate Monohydrate) 48 mg,
Manganese (Manganous Sulphate Monohydrate) 34 mg,
Copper (Copper (II) Sulphate Pentahydrate) 14 mg,
Iodine (Calcium Iodate Anhydrous & Potassium Iodide) 1.7 mg,
Selenium (Sodium Selenite) 0.29 mg

FEEDING GUIDE

WEIGHT OF DOG (kg)	GRAMS PER DAY (g)	WEIGHT OF DOG (kg)	GRAMS PER DAY (g)
1-5 kg	25 - 85g	20-30 kg	245 - 330g
5-10 kg	85 - 145g	30-40 kg	330 - 410g
10-20 kg	145 - 245g	40 kg +	410g+

* All dogs are different and the guidelines should be adapted to take into account breed, age, temperament and activity level of the individual dog. When changing foods please introduce gradually over a period of two weeks. Always ensure fresh, clean water is available.

Your Superfood 65 recipe has an 18 month shelf life. A selection of bags are available to meet your customer's needs. Please refer to the Partner Portal for more details or contact your account manager. Bag images shown for illustrative purposes only.



Important: The information provided in this document is GA Pet Food Partners Ltd interpretation of Regulation No 767/2009 including amending Regulations 2017/2279 and 2018/1903.

As with all legislation only courts can decide on the correct interpretation of the law. We would advise that you always seek legal advice when creating/printing new packaging, leaflets

or websites. The statutory Analytical Constituents declaration parameters (i.e. Crude Protein, Crude Fat, Crude Fibre, Crude Ash) may be used for declaration purposes along with Moisture. Other parameters are intended as a guide and in order to declare extra figures we suggest that analysis work is carried out to confirm levels more precisely.

Formulation updates: As information becomes available and in order to continually meet statutory analytical constituent declarations, formulations may have to be adapted to account for raw material variation and availability. There may also be other reasons outside of our immediate control (including but not limited to force majeure events) which warrant the change of a formulation to improve its suitability.