

# BRITISH GRASS-FED LAMB

with Mint, Pomegranate, Mulberry, Broccoli & Fennel

## ADULT DOG

**65%**

**TOTAL**

### 65% TOTAL LAMB

Rich in essential amino acids, vitamins & minerals to support every day health and well-being.

**35%**

**MINIMUM**

### MINIMUM 35% FRESHLY PREPARED

British Grass Fed Lamb



### DIGESTIVE HEALTH

Added pre-biotics MOS & FOS help aid digestive health



### JOINT SUPPORT

Naturally occurring collagen helps maintain healthy joints and skin.



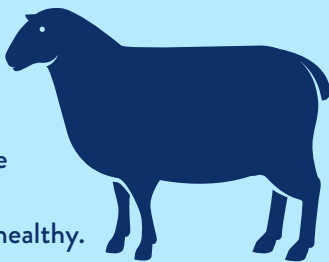
### SUPERFOOD BLEND

A blend of 5 carefully selected superfoods each with their own benefits.

## BRITISH GRASS-FED LAMB

It has been found that grass-fed lambs are leaner (have less body fat) and that the concentration of omega-3 fatty acids within the meat is increased, resulting in an increased ratio of omega-3 to omega-6 fatty acids. Lamb is a nutrient-dense, highly digestible protein source.

It is also a good source of vitamin B12 and iron which are required to help keep nerve and blood cells healthy.



## SUPERFOODS



**MINT:** Source of Potassium to help with nerve and muscle functions.



**BROCCOLI:** Source of dietary fibre to help normalise the gastrointestinal transit time.



**POMEGRANATE:** Source of Vitamin C which has an essential role in collagen synthesis important to help maintain healthy bones.



**FENNEL:** A good source of Calcium which helps maintain healthy bones and teeth.

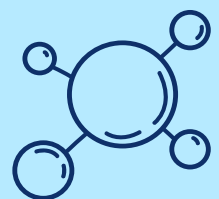


**MULBERRY:** Source of Iron to help support normal functions of the circulatory system.

## NATURALLY OCCURRING COLLAGEN

Your 35% Minimum Freshly Prepared British Grass-Fed Lamb has naturally occurring Collagen.

- ✓ Naturally occurring collagen is found in freshly prepared ingredients
- ✓ Provides important building blocks for the body
- ✓ Helps maintain healthy bones, joints and skin



## COMPOSITION



35% FRESHLY PREPARED  
BRITISH GRASS-FED LAMB

30% LAMB

OTHER FUNCTIONAL INGREDIENTS

MINT\*

POMEGRANATE\*

MULBERRY\*

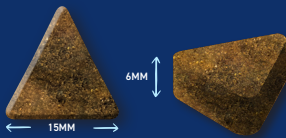
BROCCOLI\*

FENNEL\*

65% Lamb (Freshly Prepared Lamb (35%), Dried Lamb (22%), Lamb Fat (5%), Lamb Gravy (3%)), Sweet Potato, Beans, Beet Pulp, Dried Superfood Blend\* (Including Mint, Pomegranate, Mulberry, Broccoli, Fennel), Omega 3 Supplement, Minerals, Fructooligosaccharides (175 mg/kg), Mannanooligosaccharides (50 mg/kg), Olive Extract (0.01%)

\*Each equivalent to 4% Fresh Ingredients

### KIBBLE SIZE



Our adult dog kibble has been optimised and designed to suit all mouths. Product shown at actual size. Each kibble has a tolerance of +/- 1mm.

### ANALYTICAL CONSTITUENTS

Crude Protein	27.5%	Metabolisable Energy	361 kcal/100g
Crude Fat	15.5%	Omega 6 Fatty Acids	1.9%
Crude Fibre	3.5%	Omega 3 Fatty Acids	0.8%
Crude Ash	12%	Calcium	2.4%
Moisture	8%	Phosphorus	1.5%
NFE	33.5%	Collagen	7%

### NUTRITIONAL ADDITIVES (PER KG)

#### VITAMINS:

Vitamin A 14,423 IU, Vitamin D3 2,000 IU,  
Vitamin E 96 IU;

#### TRACE ELEMENTS:

Zinc (Zinc Sulphate Monohydrate) 48 mg,  
Iron (Iron (II) Sulphate Monohydrate) 48 mg,  
Manganese (Manganous Sulphate Monohydrate) 34 mg,  
Iodine (Calcium Iodate Anhydrous) 0.96 mg,  
Selenium (Sodium Selenite) 0.19 mg

### FEEDING GUIDE

WEIGHT OF DOG (kg)	GRAMS PER DAY (g)	WEIGHT OF DOG (kg)	GRAMS PER DAY (g)
1-5 kg	25 - 85g	20-30 kg	245 - 330g
5-10 kg	85 - 145g	30-40 kg	330 - 410g
10-20 kg	145 - 245g	40 kg +	410g+

\* All dogs are different and the guidelines should be adapted to take into account breed, age, temperament and activity level of the individual dog. When changing foods please introduce gradually over a period of two weeks. Always ensure fresh, clean water is available.



Your Superfood 65 recipe has an 18 month shelf life. A selection of bags are available to meet your customer's needs. Please refer to the Partner Portal for more details or contact your account manager. Bag images shown for illustrative purposes only.

Important: The information provided in this document is GA Pet Food Partners Ltd interpretation of Regulation No 767/2009 including amending Regulations 2017/2279 and 2018/1903.

As with all legislation only courts can decide on the correct interpretation of the law. We would advise that you always seek legal advice when creating/printing new packaging, leaflets

or websites. The statutory Analytical Constituents declaration parameters (i.e. Crude Protein, Crude Fat, Crude Fibre, Crude Ash) may be used for declaration purposes along with Moisture. Other parameters are intended as a guide and in order to declare extra figures we suggest that analysis work is carried out to confirm levels more precisely.

Formulation updates: As information becomes available and in order to continually meet statutory analytical constituent declarations, formulations may have to be adapted to account for raw material variation and availability. There may also be other reasons outside of our immediate control (including but not limited to force majeure events) which warrant the change of a formulation to improve its suitability.