

SCOTTISH SALMON

with Dill, Spinach, Fennel, Asparagus & Tomato

SENIOR DOG

65%

TOTAL

65% TOTAL SALMON

Rich in essential amino acids, vitamins & minerals to support every day health and well-being.

35%

MINIMUM

MINIMUM 35% FRESHLY PREPARED

Scottish Salmon

++

JOINT CARE PACK

to help support cartilage for healthy joints in senior dogs.



NATURALLY OCCURRING COLLAGEN

Naturally occurring collagen helps maintain healthy joints and skin.



PROVITAMIN

Added L-Carnitine to help maintain a healthy weight and lean muscle mass in older dogs.

SCOTTISH SALMON

Your salmon recipe contains freshly prepared Scottish Salmon. Scottish Salmon is typically fed better quality feed, and farming is less intensive with fewer fish in a cage, meaning they can swim further and develop more muscle. By offering your customers Scottish Salmon in your Superfood 65® range, you now can tell an engaging story about its origin.



SUPERFOODS



DILL: Source of Iron to help support normal functions of the circulatory system.



ASPARAGUS: Source of Vitamin C which has an essential role in collagen synthesis important to help maintain healthy bones.



SPINACH: Source of Vitamin A to help maintain healthy vision.



TOMATO: Source of Potassium to help with nerve and muscle functions.

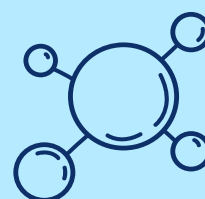


FENNEL: A good source of Calcium which helps maintain healthy bones and teeth.

NATURALLY OCCURRING COLLAGEN

Your 35% Minimum Freshly Prepared Scottish Salmon has naturally occurring Collagen.

- ✓ Naturally occurring collagen is found in freshly prepared ingredients
- ✓ Provides important building blocks for the body
- ✓ Helps maintain healthy bones, joints and skin



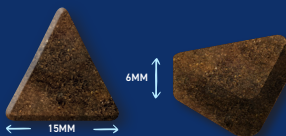
COMPOSITION



65% Salmon (Freshly Prepared Scottish Salmon (35%), Dried Salmon (24.5%), Salmon Oil (3%), Salmon Gravy (2.5%), Sweet Potato, Beans, Beet Pulp, Dried Superfood Blend* (Including Dill, Spinach, Fennel, Asparagus, Tomato), Minerals, Omega 3 Supplement, Joint Pack (Glucosamine 178 mg/kg, Methylsulfonylmethane 178 mg/kg, Chondroitin Sulphate 125 mg/kg), Fructooligosaccharides (175 mg/kg), Mannanligosaccharides (50 mg/kg), Olive Extract (0.01%)

*Each equivalent to 4% fresh ingredients.

KIBBLE SIZE



Our senior dog kibble has been optimised and designed to suit senior dogs. Product shown at actual size. Each kibble has a tolerance of +/- 1mm.

ANALYTICAL CONSTITUENTS

Crude Protein	35%	Metabolisable Energy	352 kcal/100g
Crude Fat	11%	Omega 6 Fatty Acids	1.7%
Crude Fibre	3.5%	Omega 3 Fatty Acids	1.8%
Crude Ash	9.5%	Calcium	1.7%
Moisture	8%	Phosphorus	1.5%
NFE	33%	Collagen	4%

NUTRITIONAL ADDITIVES (PER KG)

VITAMINS:

Vitamin A 14,423 IU, Vitamin D3 2,000 IU,
Vitamin E 96 IU;

TRACE ELEMENTS:

Zinc (Zinc Sulphate Monohydrate) 48 mg,
Iron (Iron (II) Sulphate Monohydrate) 48 mg,
Manganese (Manganous Sulphate Monohydrate) 34 mg,
Iodine (Calcium Iodate Anhydrous) 0.96 mg;

PROVITAMINS:

L-Carnitine 240 mg

FEEDING GUIDE

WEIGHT OF DOG (kg)	GRAMS PER DAY (g)	WEIGHT OF DOG (kg)	GRAMS PER DAY (g)
1-5 kg	25 - 85g	20-30 kg	240 - 325g
5-10 kg	85 - 145g	30-40 kg	325 - 405g
10-20 kg	145 - 240g	40 kg +	405g+

* All dogs are different and the guidelines should be adapted to take into account breed, age, temperament and activity level of the individual dog. When changing foods please introduce gradually over a period of two weeks. Always ensure fresh, clean water is available.



Your Superfood 65 recipe has an 18 month shelf life. A selection of bags are available to meet your customer's needs. Please refer to the Partner Portal for more details or contact your account manager. Bag images shown for illustrative purposes only.

Important: The information provided in this document is GA Pet Food Partners Ltd interpretation of Regulation No 767/2009 including amending Regulations 2017/2279 and 2018/1903.

As with all legislation only courts can decide on the correct interpretation of the law. We would advise that you always seek legal advice when creating/printing new packaging, leaflets

or websites. The statutory Analytical Constituents declaration parameters (i.e. Crude Protein, Crude Fat, Crude Fibre, Crude Ash) may be used for declaration purposes along with Moisture. Other parameters are intended as a guide and in order to declare extra figures we suggest that analysis work is carried out to confirm levels more precisely.

Formulation updates: As information becomes available and in order to continually meet statutory analytical constituent declarations, formulations may have to be adapted to account for raw material variation and availability. There may also be other reasons outside of our immediate control (including but not limited to force majeure events) which warrant the change of a formulation to improve its suitability.