



**Pet Food Partners**  
Our Expertise. Your Success

# GA PRODUCT GUIDE

## Grain Free Range

GA Product Code: **LGF**

# Salmon

## with Trout, Sweet Potato & Asparagus

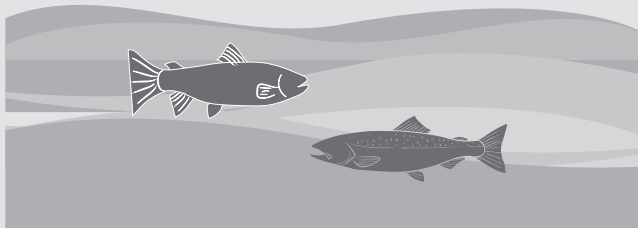
### Adult Dog - Small Breed

#### Grain Free Range



The **Grain Free** range includes a selection of the finest freshly prepared nutritious and highly digestible animal protein sources.

The range has been formulated with sweet potato and potato to be suitable for those with grain intolerance/sensitivity.



#### Why Salmon?

**Salmon** is naturally **rich** in omega 3 essential fatty acids which have anti-inflammatory properties and provide support for skin and coat condition and joint health.

#### Why Sweet Potato?

**Sweet potato** is **low in fat**, and may also benefit digestive health as it is a **rich source of dietary fibre**.

#### Why Asparagus?

**Asparagus** is **rich** in vitamins A, C and K plus folic acid which all help contribute to general health & well-being.

#### Recipe Claims

##### Minimum 26% Freshly Prepared Salmon & Trout

Responsibly sourced and highly digestible protein sources.



##### 53% Total Salmon & Trout

Rich in amino acids, vitamins & minerals salmon & trout are delicious sources of protein.



##### Sweet Potato

An excellent alternative to grains, sweet potato is a complex carbohydrate high in B vitamins.



##### Added Omega 3 Supplement

To help support healthy skin & coat.



##### Digestive Health

Pre-biotics MOS & FOS which may help to promote the growth of healthy gut bacteria and aid digestion.



##### No Added Artificial Colours & Preservatives

Naturally preserved using rosemary extract.





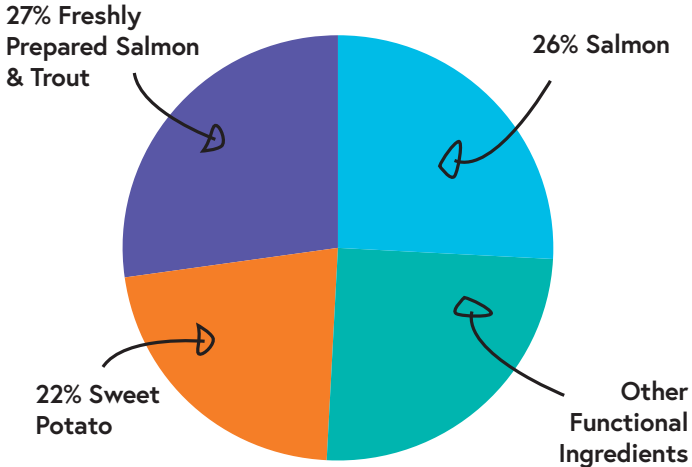
**Pet Food Partners**  
Our Expertise. Your Success

# GA PRODUCT GUIDE

## Grain Free Range

GA Product Code: **LGF**

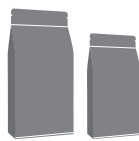
### COMPOSITION



Salmon & Trout 53% (including Freshly Prepared Salmon & Trout 27%, Dried Salmon 20%, Salmon Oil 4% & Salmon Stock 2%), Sweet Potato (22%), Peas (9%), Potato, Beet Pulp, Linseed, Minerals, Omega 3 Supplement, Asparagus (0.3%), Fructooligosaccharides (FOS, 96 mg/kg), Mannanooligosaccharides (MOS, 24 mg/kg)

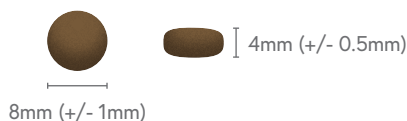
### BAG SIZES

- A selection to meet your customer's needs:
- 18 month shelf life.
- Please refer to the Price List for more details or contact your Account Manager.



### KIBBLE SIZE

- Optimal kibble size and shape for small breed adult dogs.
- A crunchy kibble texture.



### ANALYTICAL CONSTITUENTS

Crude Protein	27%
Crude Fat	15%
Crude Fibre	3%
Crude Ash	8%
Moisture	8%
NFE	39%
Metabolisable Energy	376 kcal/100g
Omega 6 Fatty Acids	1.1%
Omega 3 Fatty Acids	3.5%
Calcium	1.6%
Phosphorus	1.5%

### NUTRITIONAL ADDITIVES PER KG:

**Vitamins:** Vitamin A 15,000 IU, Vitamin D3 2,000 IU, Vitamin E 95 IU

**Trace Elements:** Zinc (Zinc Sulphate Monohydrate) 50mg, Iron (Iron (II) Sulphate Monohydrate) 50mg, Manganese (Manganous Sulphate Monohydrate) 35mg, Iodine (Calcium Iodate Anhydrous) 1mg

### FEEDING GUIDE\*

Weight of Dog (kg)	Grams per day (g)
	Adult Dog - Small Breed
1 - 3kg	25 - 55g
3 - 5kg	55 - 85g
5 - 7kg	85 - 105g
7 - 10kg	105 - 140g
10 - 13kg	140 - 170g
13 - 15kg	170 - 190g

\* All dogs are different and the guidelines should be adapted to take into account breed, age, temperament and activity level of the individual dog. When changing foods please introduce gradually over a period of two weeks. Always ensure fresh, clean water is available.

**Important:** The information provided in this document is GA Pet Food Partners Ltd interpretation of Regulation No 767/2009 including amending Regulations 2017/2279 and 2018/1903. As with all legislation only courts can decide on the correct interpretation of the law. We would advise that you always seek legal advice when creating/printing new packaging, leaflets or websites. The statutory Analytical Constituents declaration parameters (i.e. Crude Protein, Crude Fat, Crude Fibre, Crude Ash) may be used for declaration purposes along with Moisture. Other parameters are intended as a guide and in order to declare extra figures we suggest that analysis work is carried out to confirm levels more precisely. GA cannot be held liable for publication of none statutory nutrients without first getting approval from GA. GA cannot be held liable or responsible for nutrient contributions from free issue (client supplied) raw materials without specific clarification in writing. Formulation updates: As information becomes available and in order to continually meet statutory analytical constituent declarations, formulations may have to be adapted to account for raw material variation and availability. There may also be other reasons outside of our immediate control (including but not limited to force majeure events) which warrant the change of a formulation to improve its suitability. If any formulation amendment becomes a permanent change we will update the formulation matrix information and confer this to the purchaser.