



Pet Food Partners
Our Expertise. Your Success

GA PRODUCT GUIDE

Grain Free Range

GA Product Code: **GPU**

Salmon

with Haddock, White Fish, Sweet Potato & Asparagus

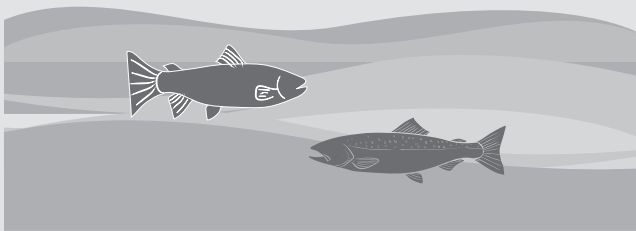
Puppy

Grain Free Range



The **Grain Free** range includes a selection of the finest freshly prepared nutritious and highly digestible animal protein sources.

The range has been formulated with sweet potato and potato to be suitable for those with grain intolerance/sensitivity.



Why Salmon?

Salmon is naturally **rich** in omega 3 essential fatty acids which have anti-inflammatory properties and provide support for skin and coat condition and joint health.

Why Sweet Potato?

Sweet potato is **low in fat**, and may also benefit digestive health as it is a **rich source of dietary fibre**.

Why Asparagus?

Asparagus is **rich** in vitamins A, C and K plus folic acid which all help contribute to general health & well-being.

Recipe Claims

Minimum 26% Freshly Prepared Salmon, Haddock & White Fish

Responsibly sourced and highly digestible protein sources.



60% Total Salmon, Haddock & White Fish

Rich in amino acids, salmon, haddock & white fish are delicious sources of protein.



Joint Care Pack

To help support cartilage metabolism for the growth of healthy joints in puppies.



Added Omega 3 Supplement

To help support cognitive and visual development.



Sweet Potato

An excellent alternative to grains, sweet potato is a complex carbohydrate high in B vitamins.



No Added Artificial Colours & Preservatives

Naturally preserved using rosemary extract.





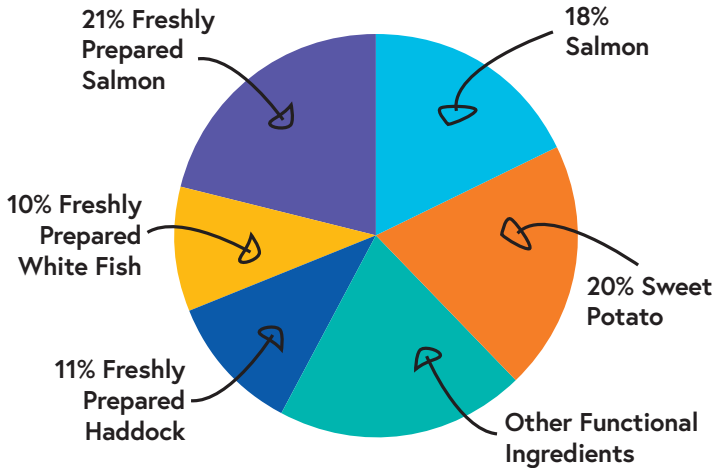
Pet Food Partners
Our Expertise. Your Success

GA PRODUCT GUIDE

Grain Free Range

GA Product Code: **GPU**

COMPOSITION



Salmon, Haddock & White Fish 60% (Freshly Prepared Salmon 21%, Dried Salmon 16%, Freshly Prepared Haddock 11%, Freshly Prepared White Fish 10% & Salmon Stock 2%), Sweet Potato (20%), Potato, Beet Pulp, Peas (6%), Linseed, Omega 3 Supplement, Minerals, Asparagus (0.1%), Glucosamine (170 mg/kg), Methylsulfonylmethane (170 mg/kg), Chondroitin Sulphate (125 mg/kg), Nucleotides, Fructooligosaccharides (FOS, 96 mg/kg), Mannanooligosaccharides (MOS, 24 mg/kg)

BAG SIZES

- A selection to meet your customer's needs:
- 18 month shelf life.
- Please refer to the Price List for more details or contact your Account Manager.
- For a 15kg Working Dog product guide, please speak to your account manager.



KIBBLE SIZE

- Optimal kibble size and shape for puppies.
- A crunchy kibble texture.



ANALYTICAL CONSTITUENTS

Crude Protein	28%
Crude Fat	13%
Crude Fibre	4%
Crude Ash	8.5%
Moisture	8%
NFE	38.5%
Metabolisable Energy	359 kcal/100g
Omega 6 Fatty Acids	2%
Omega 3 Fatty Acids	2.6%
Calcium	1.3%
Phosphorus	1.2%

NUTRITIONAL ADDITIVES PER KG:

Vitamins: Vitamin A 15,000 IU, Vitamin D3 2,000 IU, Vitamin E 95 IU

Trace Elements: Zinc (Zinc Sulphate Monohydrate) 50mg, Iron (Iron (II) Sulphate Monohydrate) 50mg, Manganese (Manganous Sulphate Monohydrate) 35mg, Copper (Copper (II) Sulphate Pentahydrate) 10mg, Iodine (Calcium Iodate Anhydrous/Potassium Iodide) 1.7 mg

FEEDING GUIDE*

Expected Weight of Adult Dog (kg)	Grams per day (g)			
	2 - 4 Months	4 - 6 Months	6 - 12 Months	12 - 15 Months
1 - 4kg	50 - 75g	70 - 80g	70g - Adult	Adult
5 - 10kg	105 - 170g	150 - 175g	150g - Adult	Adult
11 - 20kg	155 - 275g	245 - 285g	230 - 290g	235g - Adult
21 - 30kg	215 - 405g	350 - 415g	320 - 400g	335 - 345g
31 - 45kg	295 - 565g	475 - 570g	410 - 515g	435 - 450g

* All dogs are different and the guidelines should be adapted to take into account breed, age, temperament and activity level of the individual dog. When changing foods please introduce gradually over a period of two weeks. Always ensure fresh, clean water is available.

Important: The information provided in this document is GA Pet Food Partners Ltd interpretation of Regulation No 767/2009 including amending Regulations 2017/2279 and 2018/1903. As with all legislation only courts can decide on the correct interpretation of the law. We would advise that you always seek legal advice when creating/printing new packaging, leaflets or websites. The statutory Analytical Constituents declaration parameters (i.e. Crude Protein, Crude Fat, Crude Fibre, Crude Ash) may be used for declaration purposes along with Moisture. Other parameters are intended as a guide and in order to declare extra figures we suggest that analysis work is carried out to confirm levels more precisely. GA cannot be held liable for publication of none statutory nutrients without first getting approval from GA. GA cannot be held liable or responsible for nutrient contributions from free issue (client supplied) raw materials without specific clarification in writing. Formulation updates: As information becomes available and in order to continually meet statutory analytical constituent declarations, formulations may have to be adapted to account for raw material variation and availability. There may also be other reasons outside of our immediate control (including but not limited to force majeure events) which warrant the change of a formulation to improve its suitability. If any formulation amendment becomes a permanent change we will update the formulation matrix information and confer this to the purchaser.