

# FREE RANGE TURKEY

with Parsley, Papaya, Nettle, Zucchini & Pumpkin

## SMALL BREED ADULT - LIGHT

**65%**

**TOTAL**

### 65% TOTAL TURKEY & PORK

Rich in essential amino acids, vitamins & minerals to support every day health and well-being.

**35%**

**MINIMUM**

### MINIMUM 35% FRESHLY PREPARED

Free Range Turkey



### JOINT CARE PACK

to help support cartilage for healthy joints in overweight dogs



### NATURALLY OCCURRING COLLAGEN

Naturally occurring collagen helps maintain healthy joints and skin.



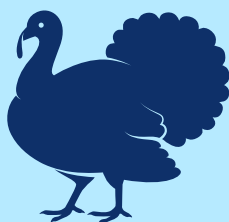
### LOW FAT

Formulated with a reduced fat content to help support a healthy weight

## FREE-RANGE TURKEY

The Free-range turkeys in your recipe are kept at lower densities in the barn with access to daylight and fresh air. They grow more slowly, meaning they have more flavour, more muscle fat, and a better, firmer meat texture.

The turkeys are a lean protein source rich in essential amino acids, low in fat and a good source of essential nutrients such as riboflavin, potassium and selenium.



## SUPERFOODS



**PARSLEY:** Source of Vitamin K which has a role in calcium metabolism to help maintain healthy bones.



**ZUCCHINI:** Source of Vitamin B3 an important cofactor in carbohydrate, protein and fat metabolism.



**PAPAYA:** A good source of Vitamin C known for its antioxidant properties which may help support the immune system.



**PUMPKIN:** Source of Vitamin A to help maintain healthy vision.

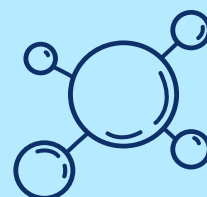


**NETTLE:** Source of Iron to help support normal functions of the circulatory system.

## NATURALLY OCCURRING COLLAGEN

Your 35% Minimum Freshly Prepared Free-Range Turkey has naturally occurring Collagen.

- ✓ Naturally occurring collagen is found in freshly prepared ingredients
- ✓ Provides important building blocks for the body
- ✓ Helps maintain healthy bones, joints and skin



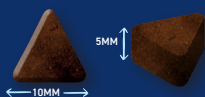
## COMPOSITION



65% Turkey & Pork (Freshly Prepared Free Range Turkey (35%), Dried Pork (14%), Dried Turkey (11.5%), Turkey Gravy (2.5%), Turkey Fat (2%)), Sweet Potato, Beans, Beet Pulp, Dried Superfood Blend\* (including Parsley, Papaya, Nettle, Courgette, Pumpkin), Minerals, Omega 3 Supplement, Joint Pack (Glucosamine 178 mg/kg, Methylsulfonylmethane 178 mg/kg, Chondroitin Sulphate 125 mg/kg), Fructooligosaccharides (175 mg/kg), Mannanooligosaccharides (50 mg/kg), Olive Extract (0.01%)

\*Each equivalent to 4% Fresh Ingredients

### KIBBLE SIZE



Our small breed kibble has been optimised and designed to suit smaller mouths. Product shown at actual size. Each kibble has a tolerance of +/- 1mm.

### ANALYTICAL CONSTITUENTS

Crude Protein	37.5%	Metabolisable Energy	349 kcal/100g
Crude Fat	11%	Omega 6 Fatty Acids	1.5%
Crude Fibre	4%	Omega 3 Fatty Acids	0.3%
Crude Ash	9.5%	Calcium	1.6%
Moisture	8%	Phosphorus	1.1%
NFE	30%	Collagen	9%

### NUTRITIONAL ADDITIVES (PER KG)

#### VITAMINS:

Vitamin A 14,423 IU, Vitamin D3 2,000 IU,  
Vitamin E 96 IU;

#### TRACE ELEMENTS:

Zinc (Zinc Sulphate Monohydrate) 48 mg,  
Iron (Iron (II) Sulphate Monohydrate) 48 mg,  
Manganese (Manganous Sulphate Monohydrate) 34 mg,  
Copper (Copper (II) Sulphate Pentahydrate) 12 mg,  
Iodine (Calcium Iodate Anhydrous & Potassium Iodide) 1.7 mg,  
Selenium (Sodium Selenite) 0.19 mg;

PROVITAMINS: L-Carnitine 240 mg

### FEEDING GUIDE

WEIGHT OF DOG (kg)	GRAMS PER DAY (g)	WEIGHT OF DOG (kg)	GRAMS PER DAY (g)
1-3 kg	25 - 55g	7-10 kg	100 - 130g
3-5 kg	55 - 75g	10-13 kg	130 - 160g
5-7 kg	75 - 100g	13-15 kg	160 - 175g

\* All dogs are different and the guidelines should be adapted to take into account breed, age, temperament and activity level of the individual dog. When changing foods please introduce gradually over a period of two weeks. Always ensure fresh, clean water is available.



Your Superfood 65 recipe has an 18 month shelf life. A selection of bags are available to meet your customer's needs. Please refer to the Partner Portal for more details or contact your account manager. Bag images shown for illustrative purposes only.

Important: The information provided in this document is GA Pet Food Partners Ltd interpretation of Regulation No 767/2009 including amending Regulations 2017/2279 and 2018/1903.

As with all legislation only courts can decide on the correct interpretation of the law. We would advise that you always seek legal advice when creating/printing new packaging, leaflets

or websites. The statutory Analytical Constituents declaration parameters (i.e. Crude Protein, Crude Fat, Crude Fibre, Crude Ash) may be used for declaration purposes along with Moisture. Other parameters are intended as a guide and in order to declare extra figures we suggest that analysis work is carried out to confirm levels more precisely.

Formulation updates: As information becomes available and in order to continually meet statutory analytical constituent declarations, formulations may have to be adapted to account for raw material variation and availability. There may also be other reasons outside of our immediate control (including but not limited to force majeure events) which warrant the change of a formulation to improve its suitability.