



**Pet Food Partners**  
Our Expertise. Your Success

# GA PRODUCT GUIDE

## Grain Free Range

GA Product Code: **GFW**

# Chicken & Salmon

## with Sweet Potato

### Kitten

#### Grain Free Range



The **Grain Free** range includes a selection of the finest freshly prepared nutritious and highly digestible animal protein sources.

The range has been formulated with sweet potato and potato to be suitable for those with grain intolerance/sensitivity.

#### Why Chicken?

**Chicken** is a **lean** protein source rich in essential amino acids. It is also a good source of vitamins & minerals including B vitamins and iron which may **help** contribute to overall health and well-being.

#### Why Salmon?

**Salmon** is naturally **rich** in omega 3 essential fatty acids which have anti-inflammatory properties and provide support for skin and coat condition and joint health.

#### Why do Kittens need a specific recipe?

Kittens grow quickly, within 6 months they will have reached approximately 75% of their adult body weight and so getting their diet right is vital to help them grow from a kitten into a healthy cat.

Our complete kitten recipe is formulated to provide young cats with the balanced nutrition and increased energy content that they require during growth. This includes a higher level of protein, rich in essential amino acids to support healthy muscle growth and added vitamin E to help support the immune system. The smaller kibble size of a kitten recipe also helps to make meal times easily manageable.



#### Recipe Claims

##### 75% Total Chicken & Salmon

Rich in essential amino acids, vitamins & minerals to help support healthy muscle growth.



##### Minimum 26% Freshly Prepared Proteins

Highly digestible and palatable multi-source of proteins, ideal for kittens.



##### Immune Support

Added vitamin E to help support the immune function.



##### Healthy Heart & Vision

With added taurine and vitamin A to nourish the heart and help maintain vision.



##### Reduce Stool Odour

Formulated with added yucca to help reduce stool odour.



##### Healthy Skin & Coat

Contains omega 3 essential fatty acids to promote healthy skin and a soft & shiny coat.





**Pet Food Partners**

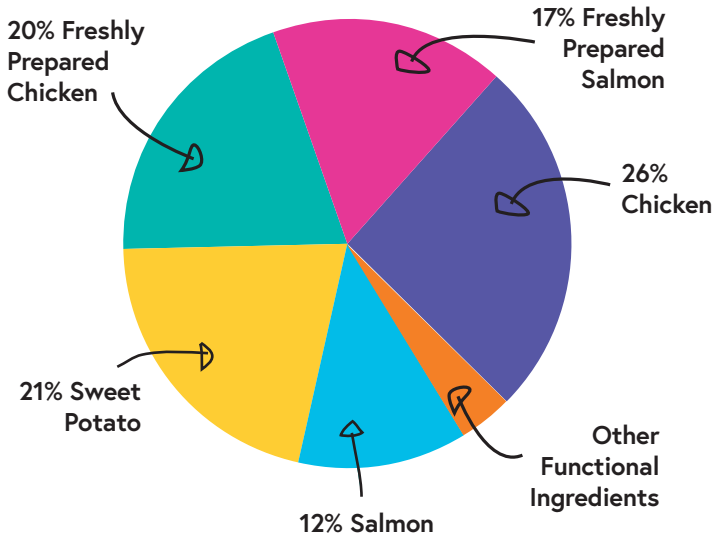
Our Expertise. Your Success

# GA PRODUCT GUIDE

## Grain Free Range

GA Product Code: **GFW**

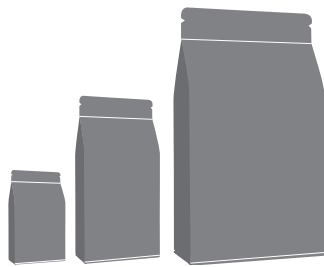
### COMPOSITION



Chicken & Salmon 75% (including 20% Freshly Prepared Chicken, 19% Dried Chicken, 17% Freshly Prepared Salmon, 10% Dried Salmon, 5% Chicken Fat, 2% Chicken Stock & 2% Salmon Oil), Sweet Potato (21%), Potato, Brewer's Yeast, Minerals, Dried Carrot, Yucca Extract (190 mg/kg)

### BAG SIZES

- A selection to meet your customer's needs:
- 18 month shelf life.
- Please refer to the Price List for pack size availability



### KIBBLE SIZE

- Optimal kibble size and shape for kittens.
- A crunchy kibble texture.



### ANALYTICAL CONSTITUENTS

Crude Protein	38%
Crude Fat	18%
Crude Fibre	2%
Crude Ash	8%
Moisture	7%
NFE	27%
Metabolisable Energy	405 kcal/100g
Omega 6 Fatty Acids	2.9%
Omega 3 Fatty Acids	2.1%
Calcium	1.1%
Phosphorus	0.9%

### NUTRITIONAL ADDITIVES PER KG:

**Vitamins:** Vitamin A 25,000 IU, Vitamin D3 1,730 IU, Vitamin E 255 IU

**Provitamins:** Taurine 2,000mg, L-Carnitine 1,010mg

**Amino Acids:** Methionine 2,200 mg, Lysine 660 mg

**Trace Elements:** Zinc (Zinc Sulphate Monohydrate) 95 mg, Iron (Iron (II) Sulphate Monohydrate) 70 mg, Manganese (Manganous Sulphate Monohydrate) 30 mg, Copper (Copper (II) Sulphate Pentahydrate) 12 mg, Iodine (Potassium Iodide) 3.6 mg

### FEEDING GUIDE\*

Expected weight of adult cat (kg)	Daily Feeding Amount (g)			
	2 - 4 Months	4 - 6 Months	6 - 8 Months	8 - 12 Months
2 - 3kg	35 - 45g	45 - 55g	55 - 50g	50g - Adult
3 - 4kg	40 - 50g	55 - 65g	65 - 60g	60g - Adult
4 - 5kg	45 - 55g	65 - 75g	75 - 70g	70g - Adult
5 - 6kg	50 - 60g	70 - 80g	80 - 75g	75g - Adult

\*Based on NRC recommendations of a kitten. All kittens are different and the guidelines should be adapted to take into account breed, age, temperament and activity level of the individual kitten. When changing foods please introduce gradually over a period of two weeks. Always ensure that fresh, clean water is available.

**Important:** The information provided in this document is GA Pet Food Partners Ltd interpretation of Regulation No 767/2009 including amending Regulations 2017/2279 and 2018/1903. As with all legislation only courts can decide on the correct interpretation of the law. We would advise that you always seek legal advice when creating/printing new packaging, leaflets or websites. The statutory Analytical Constituents declaration parameters (i.e. Crude Protein, Crude Fat, Crude Fibre, Crude Ash) may be used for declaration purposes along with Moisture. Other parameters are intended as a guide and in order to declare extra figures we suggest that analysis work is carried out to confirm levels more precisely. GA cannot be held liable for publication of none statutory nutrients without first getting approval from GA. GA cannot be held liable or responsible for nutrient contributions from free issue (client supplied) raw materials without specific clarification in writing. Formulation updates: As information becomes available and in order to continually meet statutory analytical constituent declarations, formulations may have to be adapted to account for raw material variation and availability. There may also be other reasons outside of our immediate control (including but not limited to force majeure events) which warrant the change of a formulation to improve its suitability. If any formulation amendment becomes a permanent change we will update the formulation matrix information and confer this to the purchaser.



**Pet Food Partners**

Our Expertise. Your Success

# GA PRODUCT GUIDE

## Grain Free Range

GA Product Code: **GFV**

# Salmon

## with Sweet Potato

### Adult Cat

#### Grain Free Range



The **Grain Free** range includes a selection of the finest freshly prepared nutritious and highly digestible animal protein sources.

The range has been formulated with sweet potato and potato to be suitable for those with grain intolerance/sensitivity.

#### Why Salmon?

**Salmon** is naturally **rich** in omega 3 essential fatty acids which have anti-inflammatory properties and provide support for skin and coat condition and joint health.

#### Why Sweet Potato?

**Sweet potato** is low in fat, and may also benefit digestive health as it is a rich source of dietary fibre.

#### Why do Adult Cats need a specific recipe?

From 12 months of age, cats require a complete and balanced diet formulated for adults to help support their everyday health & well-being and provide everything they need throughout their adult years. Unlike dogs, cats cannot synthesize all amino acids within their body and so it is essential that these are provided in the diet to maintain their health.

Our adult cat recipe is a great source of quality protein, rich in essential amino acids including taurine and vitamin A to help support the heart & vision, along with omega 3 which also promotes good coat & skin condition. This complete diet provides the confidence that the cat has everything they require to lead a happy and healthy life.



#### Recipe Claims

##### 60% Total Salmon

Rich in essential amino acids, vitamins & minerals to promote every day health and well-being



##### Minimum 26% Freshly Prepared Salmon

Responsibly sourced and highly digestible protein source, ideal for cats



##### Immune Support

Added vitamin E to help support the immune function



##### Healthy Heart & Vision

With added taurine and vitamin A to nourish the heart and help maintain vision



##### Reduce Stool Odour

Formulated with added yucca to help reduce stool odour



##### Healthy Skin & Coat

Contains omega 3 essential fatty acids to promote healthy skin and a soft & shiny coat





**Pet Food Partners**

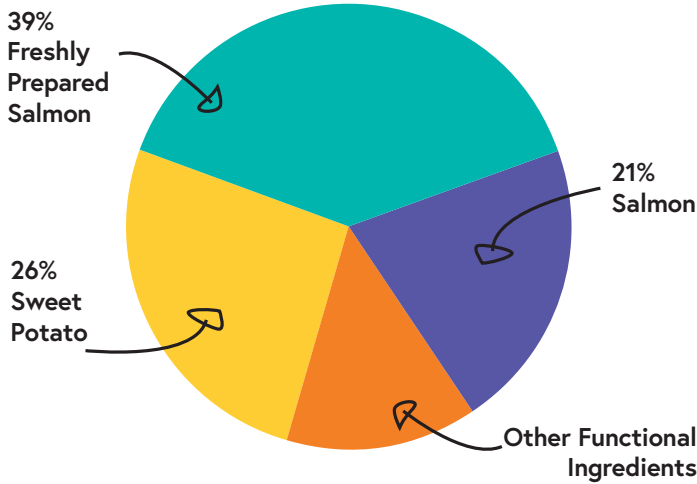
Our Expertise. Your Success

# GA PRODUCT GUIDE

# Grain Free Range

GA Product Code: **GFV**

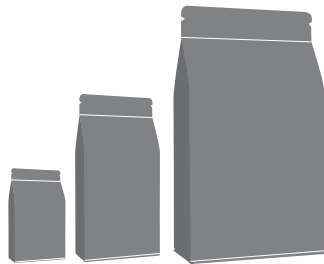
## COMPOSITION



Salmon 60% (including 39% Freshly Prepared Salmon, 21% Dried Salmon), Sweet Potato (26%), Sunflower Oil, Potato, Brewer's Yeast, Olive Oil, Fish Stock, Potato Protein, Pea Protein, Minerals, Omega 3 Supplement, Dried Carrots, Dried Asparagus, Yucca Extract (190 mg/kg)

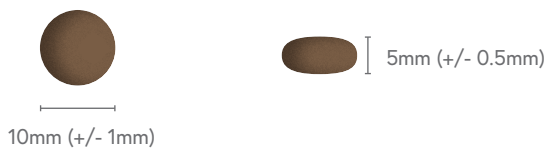
## BAG SIZES

- A selection to meet your customer's needs:
- 18 month shelf life.
- Please refer to the Price List for pack size availability



## KIBBLE SIZE

- Optimal kibble size and shape for cats.
- A crunchy kibble texture.



## ANALYTICAL CONSTITUENTS

Crude Protein	32%
Crude Fat	15.5%
Crude Fibre	2.5%
Crude Ash	8%
Moisture	7%
NFE	35%
Metabolisable Energy	388 kcal/100g
Omega 6 Fatty Acids	1.2%
Omega 3 Fatty Acids	2.0%
Calcium	1.4%
Phosphorus	1.1%

## NUTRITIONAL ADDITIVES PER KG:

**Vitamins:** Vitamin A 25,000 IU, Vitamin D3 1,730 IU, Vitamin E 255 IU

**Provitamins:** Taurine 2,000mg, L-Carnitine 1,010mg

**Amino Acids:** Methionine 2,200 mg, Lysine 660 mg

**Trace Elements:** Zinc (Zinc Sulphate Monohydrate) 95 mg, Iron (Iron (II) Sulphate Monohydrate) 70 mg, Manganese (Manganous Sulphate Monohydrate) 30 mg, Copper (Copper (II) Sulphate Pentahydrate) 12 mg, Iodine (Potassium Iodide) 3.6 mg

## FEEDING GUIDE\*

Weight of Cat (kg)	Grams per day (g)
	Cat
1 - 2kg	20 - 35g
2 - 3kg	35 - 45g
3 - 4kg	45 - 55g
4 - 5kg	55 - 65g
5+kg	65+g

\*Based on NRC recommendations of an adult cat. All cats are different and the guidelines should be adapted to take into account breed, age, temperament and activity level of the individual cat. When changing foods please introduce gradually over a period of two weeks. Always ensure that fresh, clean water is available.

**Important:** The information provided in this document is GA Pet Food Partners Ltd interpretation of Regulation No 767/2009 including amending Regulations 2017/2279 and 2018/1903. As with all legislation only courts can decide on the correct interpretation of the law. We would advise that you always seek legal advice when creating/printing new packaging, leaflets or websites. The statutory Analytical Constituents declaration parameters (i.e. Crude Protein, Crude Fat, Crude Fibre, Crude Ash) may be used for declaration purposes along with Moisture. Other parameters are intended as a guide and in order to declare extra figures we suggest that analysis work is carried out to confirm levels more precisely. GA cannot be held liable for publication of none statutory nutrients without first getting approval from GA. GA cannot be held liable or responsible for nutrient contributions from free issue (client supplied) raw materials without specific clarification in writing. Formulation updates: As information becomes available and in order to continually meet statutory analytical constituent declarations, formulations may have to be adapted to account for raw material variation and availability. There may also be other reasons outside of our immediate control (including but not limited to force majeure events) which warrant the change of a formulation to improve its suitability. If any formulation amendment becomes a permanent change we will update the formulation matrix information and confer this to the purchaser.



**Pet Food Partners**

Our Expertise. Your Success

# GA PRODUCT GUIDE

## Grain Free Range

GA Product Code: **GFU**

# Turkey

## with Sweet Potato

### Adult Cat

#### Grain Free Range



The **Grain Free** range includes a selection of the finest freshly prepared nutritious and highly digestible animal protein sources.

The range has been formulated with sweet potato and potato to be suitable for those with grain intolerance/sensitivity.

#### Why Turkey?

**Turkey** is a **lean** protein source **rich** in essential amino acids. It is also low in fat and a good source of essential nutrients such as riboflavin, potassium and selenium.

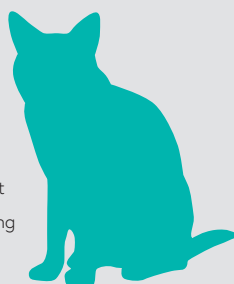
#### Why Sweet Potato?

Sweet potato is low in fat, and may also benefit digestive health as it is a rich source of dietary fibre.

#### Why do Adult Cats need a specific recipe?

From 12 months of age, cats require a complete and balanced diet formulated for adults to help support their everyday health & well-being and provide everything they need throughout their adult years. Unlike dogs, cats cannot synthesize all amino acids within their body and so it is essential that these are provided in the diet to maintain their health.

Our adult cat recipe is a great source of quality protein, rich in essential amino acids including taurine and vitamin A to help support the heart & vision, along with omega 3 which also promotes good coat & skin condition. This complete diet provides the confidence that the cat has everything they require to lead a happy and healthy life.



#### Recipe Claims

##### 60% Total Turkey

Rich in essential amino acids, vitamins & minerals to promote every day health and well-being.



##### Minimum 26% Freshly Prepared Turkey

Responsibly sourced and highly digestible protein, ideals for cats.



##### Immune Support

Added vitamin E to help support the immune function.



##### Healthy Heart & Vision

With added taurine and vitamin A to nourish the heart and help maintain vision.



##### Reduce Stool Odour

Formulated with added yucca to help reduce stool odour.



##### Healthy Skin & Coat

Contains omega 3 essential fatty acids to promote healthy skin and a soft & shiny coat.





**Pet Food Partners**

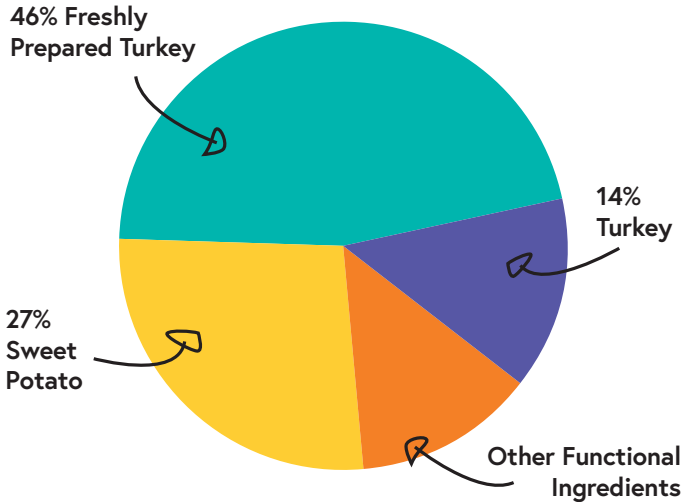
Our Expertise. Your Success

# GA PRODUCT GUIDE

# Grain Free Range

GA Product Code: **GFU**

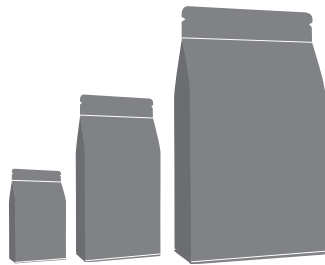
## COMPOSITION



Turkey 60% (including 46% Freshly Prepared Turkey, 14% Dried Turkey), Sweet Potato (27%), Potato Protein, Potato, Poultry Stock, Pea Protein, Omega 3 Supplement, Brewer's Yeast, Minerals, Dried Cranberry, Dried Carrot, Yucca Extract (190 mg/kg)

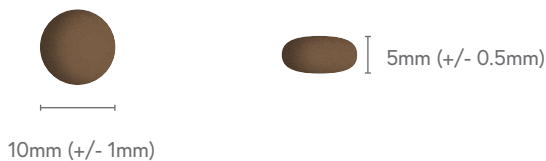
## BAG SIZES

- A selection to meet your customer's needs:
- 18 month shelf life.
- Please refer to the Price List for pack size availability



## KIBBLE SIZE

- Optimal kibble size and shape for cats.
- A crunchy kibble texture.



## ANALYTICAL CONSTITUENTS

Crude Protein	32%
Crude Fat	15.5%
Crude Fibre	2.5%
Crude Ash	8%
Moisture	7%
NFE	35%
Metabolisable Energy	388 kcal/100g
Omega 6 Fatty Acids	2.9%
Omega 3 Fatty Acids	0.6%
Calcium	1.4%
Phosphorus	1.1%

## NUTRITIONAL ADDITIVES PER KG:

**Vitamins:** Vitamin A 25,000 IU, Vitamin D3 1,730 IU, Vitamin E 255 IU

**Provitamins:** Taurine 2,000mg, L-Carnitine 1,010mg

**Amino Acids:** Methionine 2,200 mg, Lysine 660 mg

**Trace Elements:** Zinc (Zinc Sulphate Monohydrate) 95 mg, Iron (Iron (II) Sulphate Monohydrate) 70 mg, Manganese (Manganous Sulphate Monohydrate) 30 mg, Copper (Copper (II) Sulphate Pentahydrate) 5 mg, Iodine (Potassium Iodide) 3.6 mg, Selenium (Sodium Selenite) 0.29 mg

## FEEDING GUIDE\*

Weight of Cat (kg)	Grams per day (g)
	Cat
1 - 2kg	20 - 35g
2 - 3kg	35 - 45g
3 - 4kg	45 - 55g
4 - 5kg	55 - 65g
5+kg	65+g

\*Based on NRC recommendations of an adult cat. All cats are different and the guidelines should be adapted to take into account breed, age, temperament and activity level of the individual cat. When changing foods please introduce gradually over a period of two weeks. Always ensure that fresh, clean water is available.

**Important:** The information provided in this document is GA Pet Food Partners Ltd interpretation of Regulation No 767/2009 including amending Regulations 2017/2279 and 2018/1903. As with all legislation only courts can decide on the correct interpretation of the law. We would advise that you always seek legal advice when creating/printing new packaging, leaflets or websites. The statutory Analytical Constituents declaration parameters (i.e. Crude Protein, Crude Fat, Crude Fibre, Crude Ash) may be used for declaration purposes along with Moisture. Other parameters are intended as a guide and in order to declare extra figures we suggest that analysis work is carried out to confirm levels more precisely. GA cannot be held liable for publication of none statutory nutrients without first getting approval from GA. GA cannot be held liable or responsible for nutrient contributions from free issue (client supplied) raw materials without specific clarification in writing. Formulation updates: As information becomes available and in order to continually meet statutory analytical constituent declarations, formulations may have to be adapted to account for raw material variation and availability. There may also be other reasons outside of our immediate control (including but not limited to force majeure events) which warrant the change of a formulation to improve its suitability. If any formulation amendment becomes a permanent change we will update the formulation matrix information and confer this to the purchaser.