

ENGLISH COUNTRY DUCK

with Parsnip, Beetroot, Orange, Asparagus & Pumpkin

ADULT DOG

65%

TOTAL

65% TOTAL DUCK

Rich in essential amino acids, vitamins & minerals to support every day health and well-being.

35%

MINIMUM

MINIMUM 35% FRESHLY PREPARED

English Country Duck



DIGESTIVE HEALTH

Added pre-biotics MOS & FOS help aid digestive health



JOINT SUPPORT

Naturally occurring collagen helps maintain healthy joints and skin.

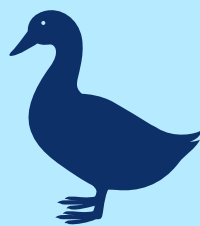


SUPERFOOD BLEND

A blend of 5 carefully selected superfoods each with their own benefits.

ENGLISH COUNTRY DUCK

We source barn-reared English Country Ducks which are Farm Assured. We believe this provides the best possible outcomes for the health and welfare of this fantastic protein source. Duck is a lean, nutrient-dense source of protein and also provides nutrients such as iron, selenium, B vitamins and zinc which contribute towards general health and well-being.



SUPERFOODS



PARSNIP: Source of Vitamin B3 essential for energy metabolism - important for exercising and playing.



ASPARAGUS: Source of Iron to help support normal functions of the circulatory system.



BEETROOT: Source of dietary fibre to help normalise the gastrointestinal transit time.



PUMPKIN: Source of Vitamin A to help maintain healthy vision.

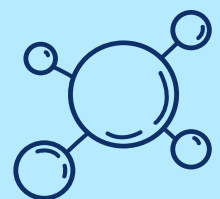


ORANGE: A good source of Vitamin C known for its antioxidant properties which may help support the immune system.

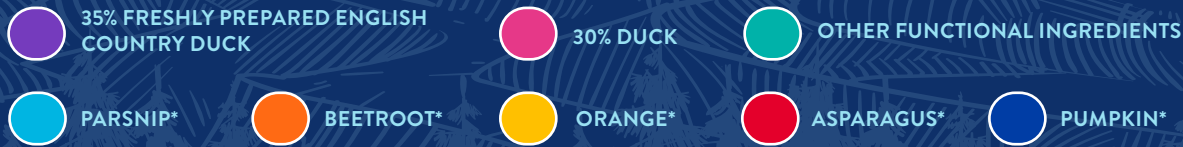
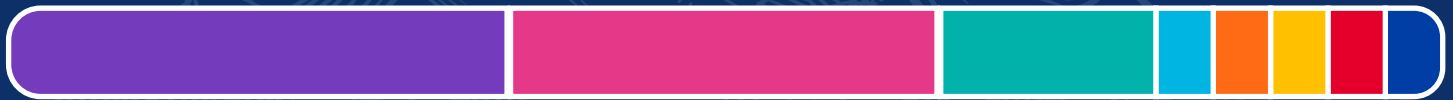
NATURALLY OCCURRING COLLAGEN

Your 35% Minimum Freshly Prepared English Country Duck has naturally occurring Collagen.

- ✓ Naturally occurring collagen is found in freshly prepared ingredients
- ✓ Provides important building blocks for the body
- ✓ Helps maintain healthy bones, joints and skin



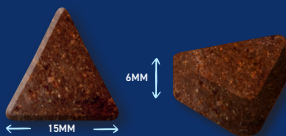
COMPOSITION



65% Duck (Freshly Prepared English Duck (35%), Dried Duck (22%), Duck Fat (5%), Duck Stock (3%)), Sweet Potato, Beans, Beet Pulp, Dried Superfood Blend* (Including Parsnip, Beetroot, Orange, Asparagus, Pumpkin), Omega 3 Supplement, Minerals, Fructooligosaccharides (175 mg/kg), Mannanooligosaccharides (50 mg/kg), Olive Extract (0.01%)

*Each equivalent to 4% Fresh Ingredients

KIBBLE SIZE



Our adult dog kibble has been optimised and designed to suit all mouths. Product shown at actual size. Each kibble has a tolerance of +/- 1mm.

ANALYTICAL CONSTITUENTS

Crude Protein	28%	Metabolisable Energy	376 kcal/100g
Crude Fat	16%	Omega 6 Fatty Acids	2.5%
Crude Fibre	3%	Omega 3 Fatty Acids	0.4%
Crude Ash	9.5%	Calcium	2.2%
Moisture	8%	Phosphorus	1.6%
NFE	35.5%	Collagen	7%

NUTRITIONAL ADDITIVES (PER KG)

VITAMINS:

Vitamin A 14,423 IU, Vitamin D3 2,000 IU, Vitamin E 96 IU;

TRACE ELEMENTS:

Zinc (Zinc Sulphate Monohydrate) 48 mg,
Iron (Iron (II) Sulphate Monohydrate) 48 mg,
Manganese (Manganous Sulphate Monohydrate) 34 mg,
Copper (Copper (II) Sulphate Pentahydrate) 12 mg,
Iodine (Calcium Iodate Anhydrous) 0.96 mg,
Selenium (Sodium Selenite) 0.19 mg

FEEDING GUIDE

WEIGHT OF DOG (KG)	GRAMS PER DAY (G)	WEIGHT OF DOG (KG)	GRAMS PER DAY (G)
1-5 kg	25 - 85g	20-30 kg	235 - 320g
5-10 kg	85 - 140g	30-40 kg	320 - 395g
10-20 kg	140 - 235g	40 kg +	395g+

* All dogs are different and the guidelines should be adapted to take into account breed, age, temperament and activity level of the individual dog. When changing foods please introduce gradually over a period of two weeks. Always ensure fresh, clean water is available.



Your Superfood 65 recipe has an 18 month shelf life. A selection of bags are available to meet your customer's needs. Please refer to the Partner Portal for more details or contact your account manager. Bag images shown for illustrative purposes only.

Important: The information provided in this document is GA Pet Food Partners Ltd interpretation of Regulation No 767/2009 including amending Regulations 2017/2279 and 2018/1903.

As with all legislation only courts can decide on the correct interpretation of the law. We would advise that you always seek legal advice when creating/printing new packaging, leaflets

or websites. The statutory Analytical Constituents declaration parameters (i.e. Crude Protein, Crude Fat, Crude Fibre, Crude Ash) may be used for declaration purposes along with Moisture. Other parameters are intended as a guide and in order to declare extra figures we suggest that analysis work is carried out to confirm levels more precisely.

Formulation updates: As information becomes available and in order to continually meet statutory analytical constituent declarations, formulations may have to be adapted to account for raw material variation and availability. There may also be other reasons outside of our immediate control (including but not limited to force majeure events) which warrant the change of a formulation to improve its suitability.